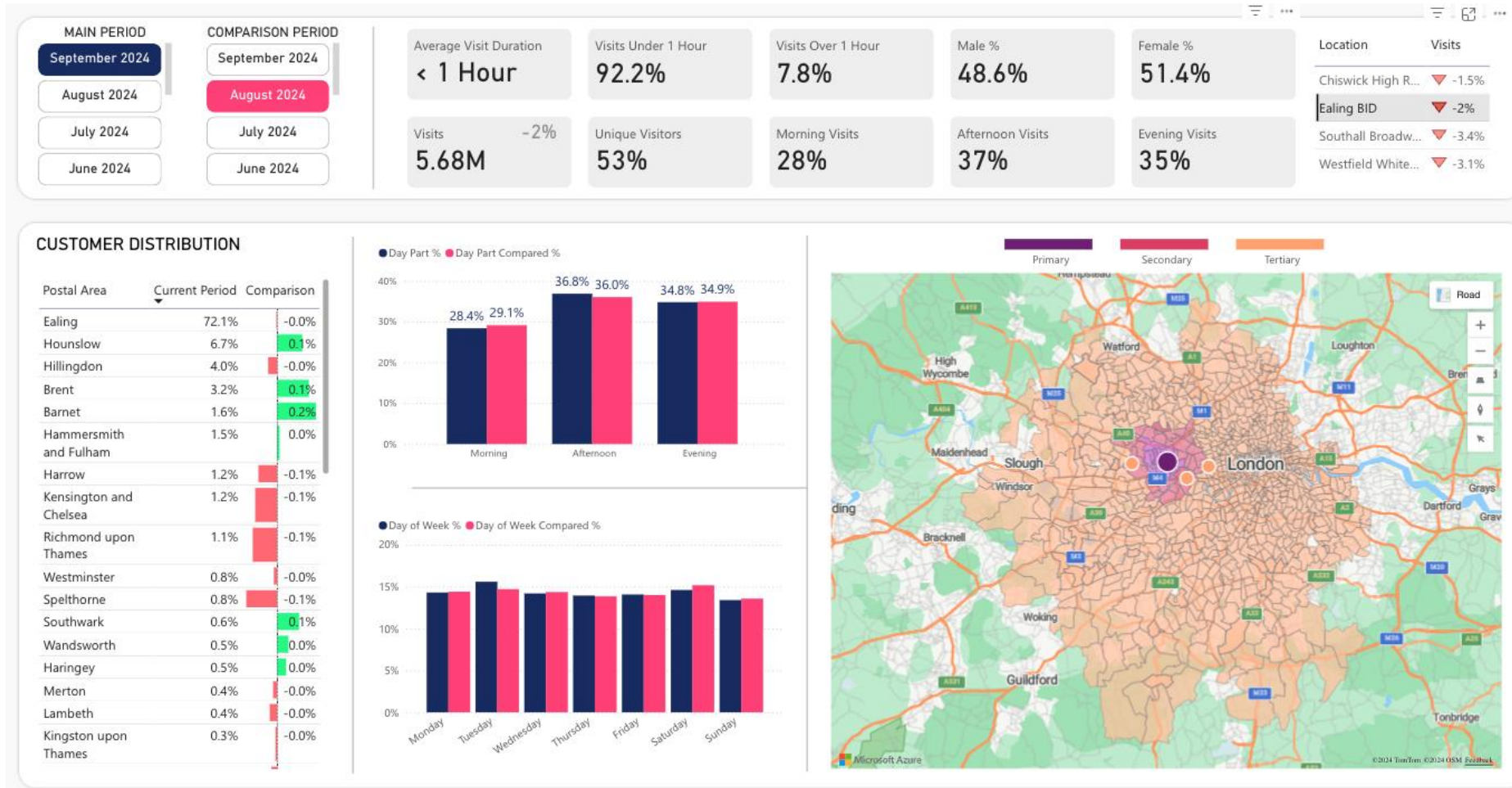
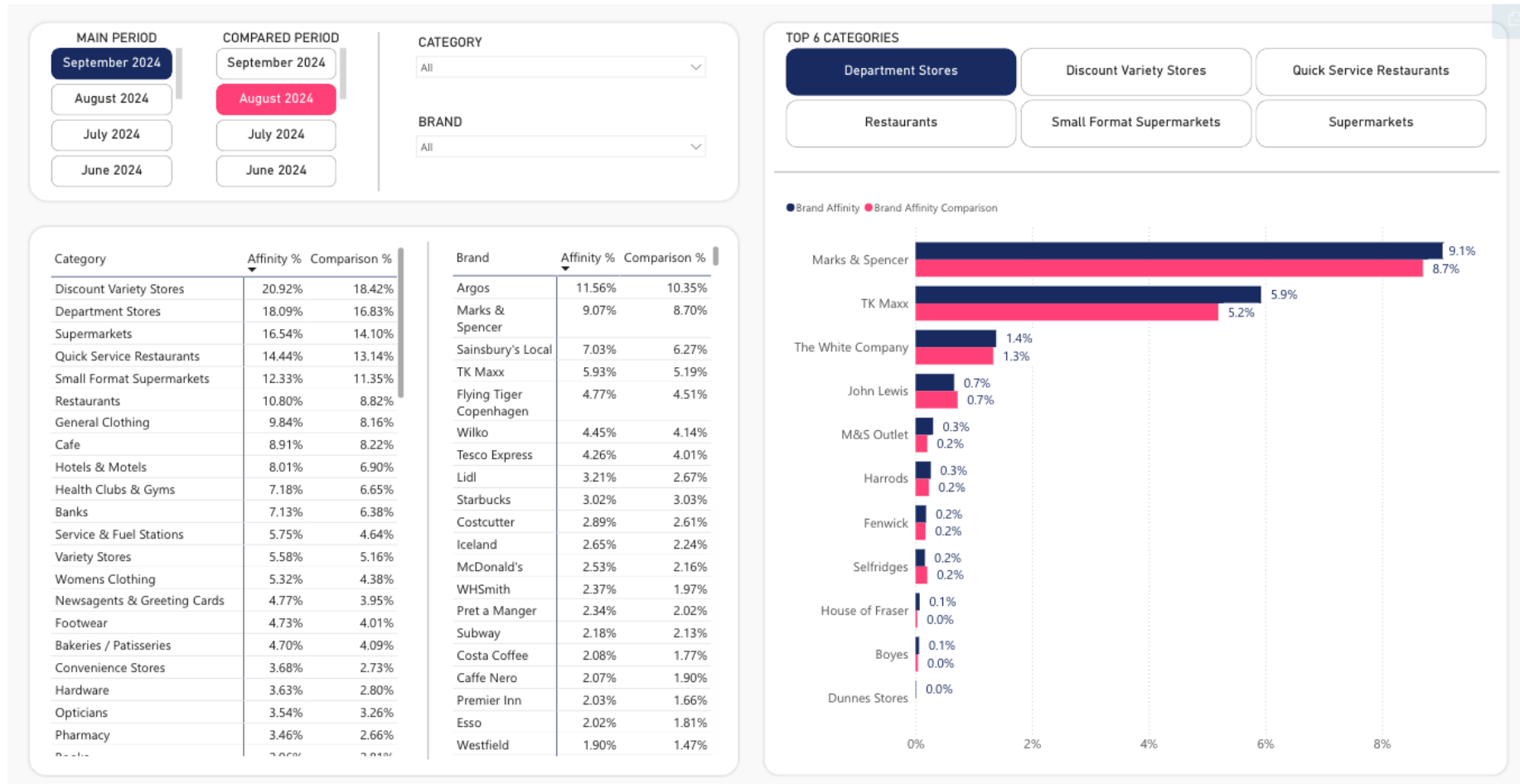


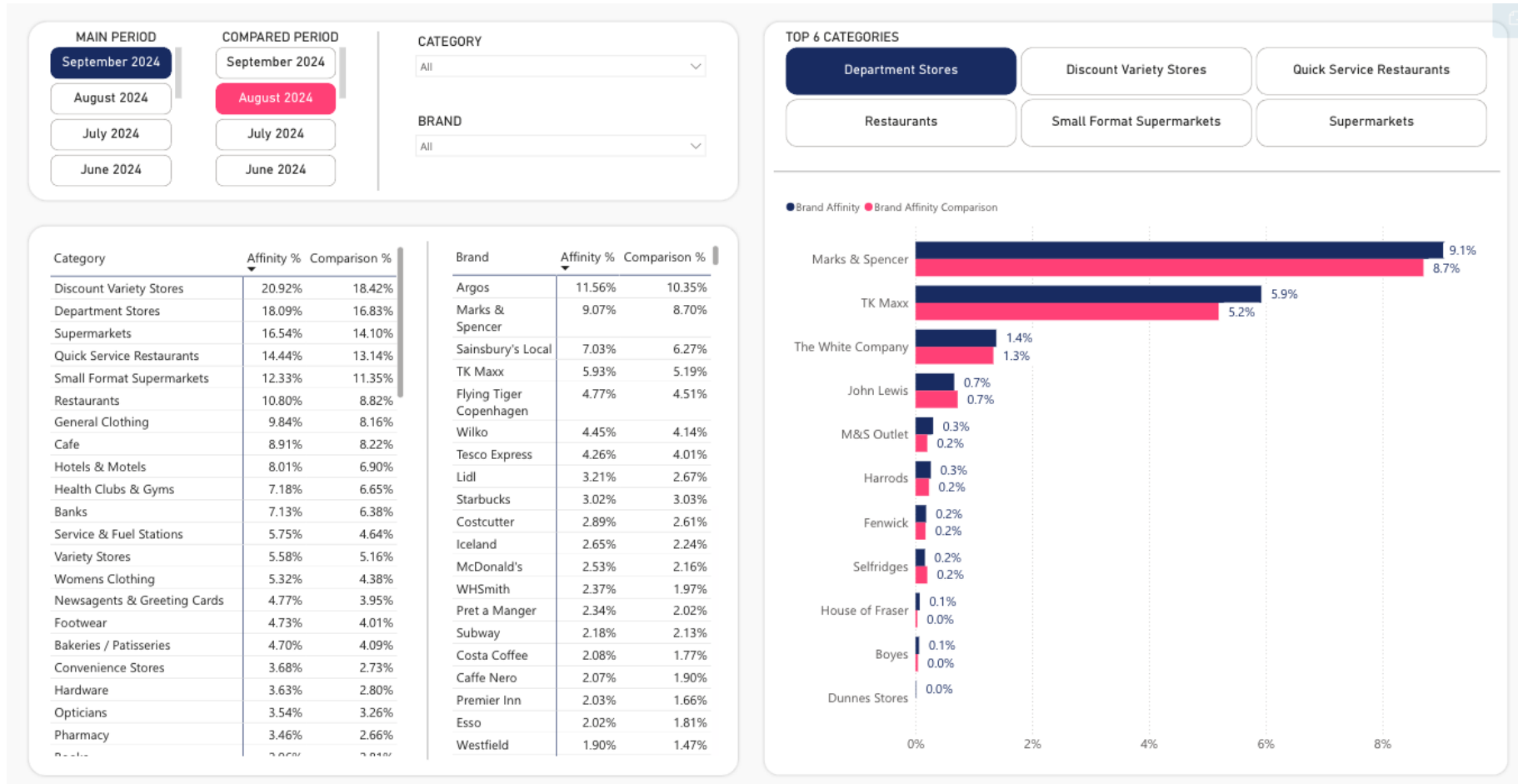
# September Footfall 2024 compared to August 2024



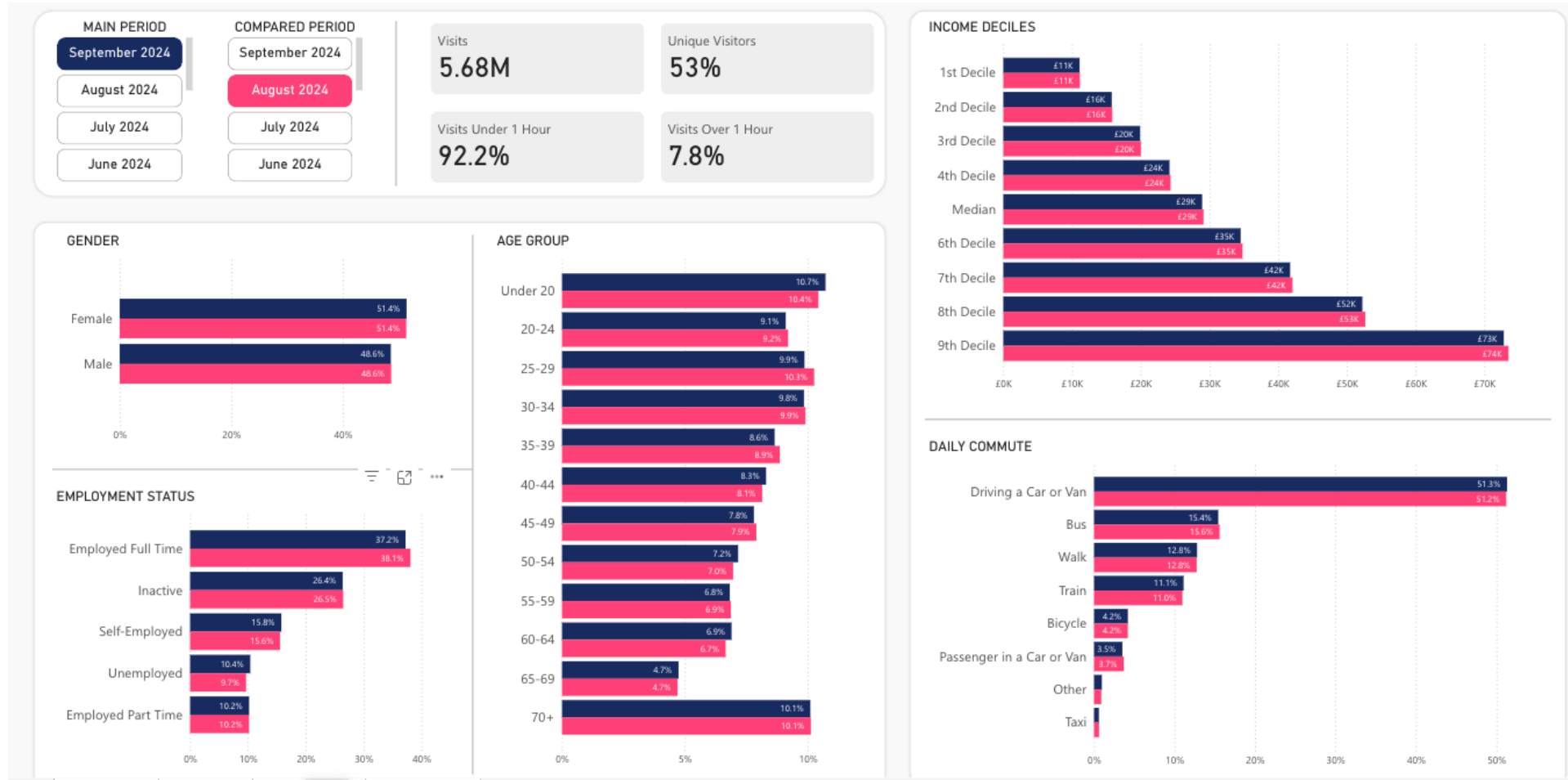
# September Footfall 2024 compared to August 2024



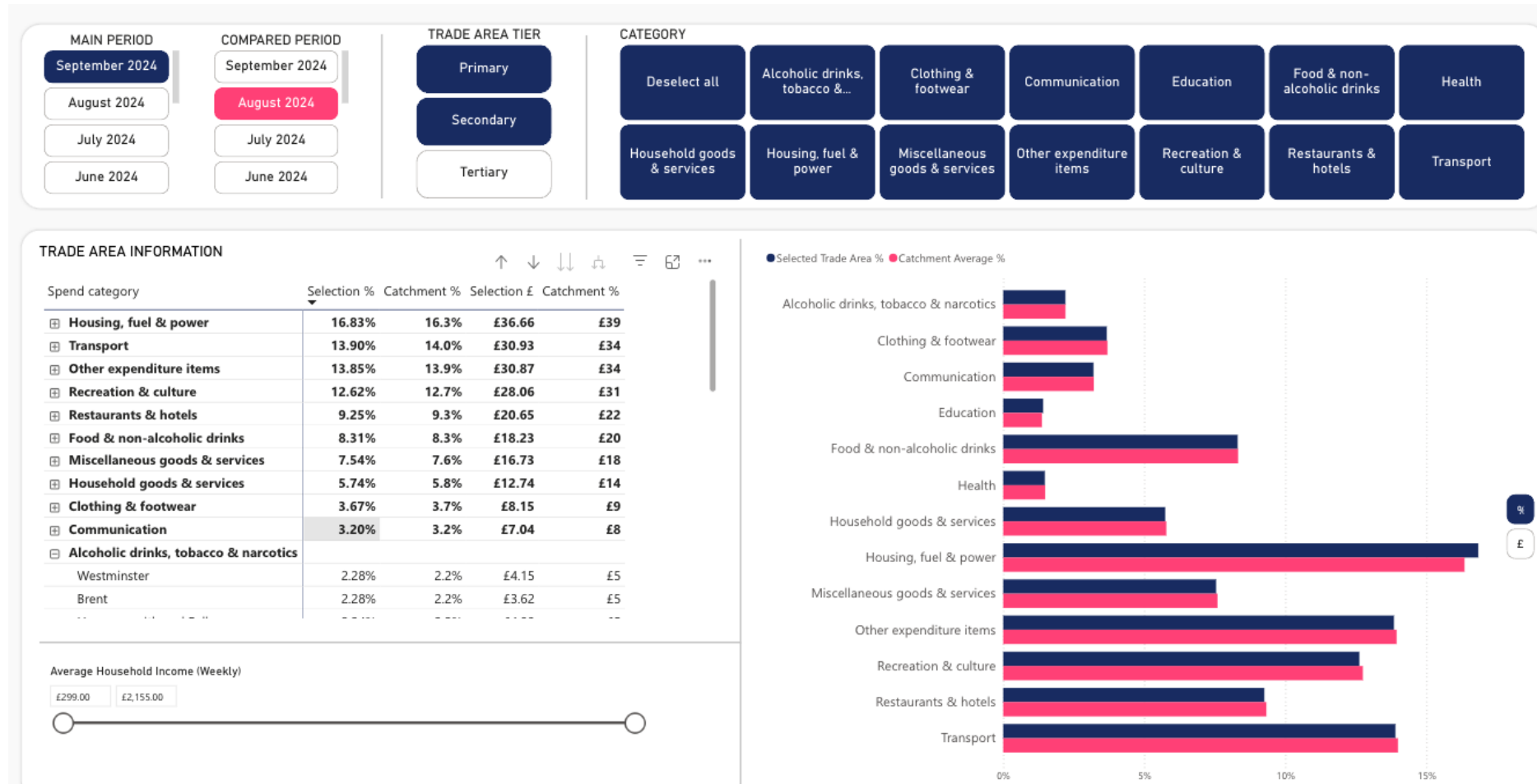
# September Footfall 2024 compared to August 2024



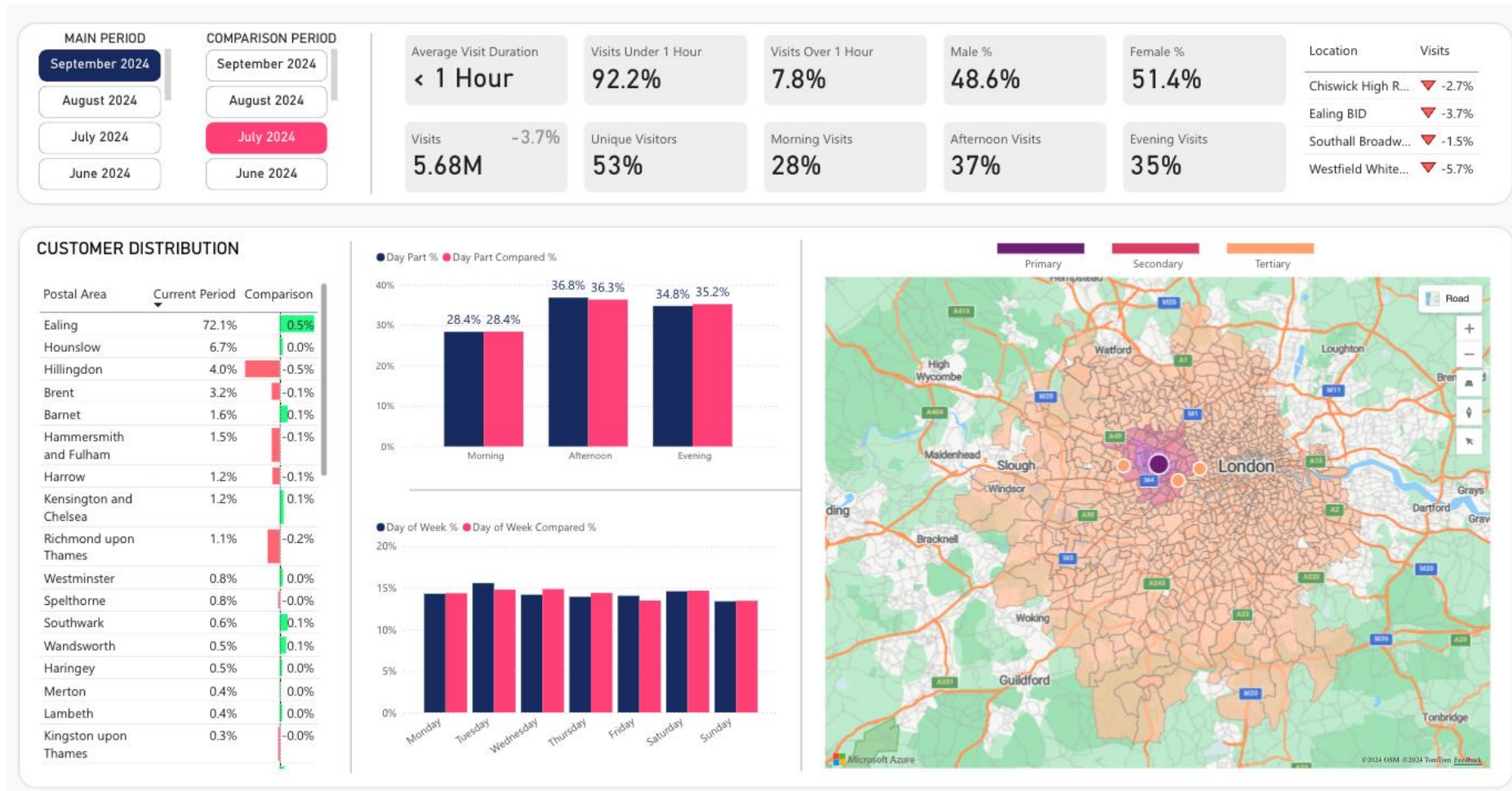
# September Footfall 2024 compared to August 2024



# September Footfall 2024 compared to August 2024



# September Footfall 2024 compared to July 2024



### CUSTOMER DISTRIBUTION

Postal Area	Current Period	Comparison
Ealing	72.1%	0.5%
Hounslow	6.7%	0.0%
Hillingdon	4.0%	-0.5%
Brent	3.2%	-0.1%
Barnet	1.6%	-0.1%
Hammersmith and Fulham	1.5%	-0.1%
Harrow	1.2%	-0.1%
Kensington and Chelsea	1.2%	0.1%
Richmond upon Thames	1.1%	-0.2%
Westminster	0.8%	0.0%
Spelthorne	0.8%	-0.0%
Southwark	0.6%	-0.1%
Wandsworth	0.5%	-0.1%
Haringey	0.5%	0.0%
Merton	0.4%	0.0%
Lambeth	0.4%	0.0%
Kingston upon Thames	0.3%	-0.0%

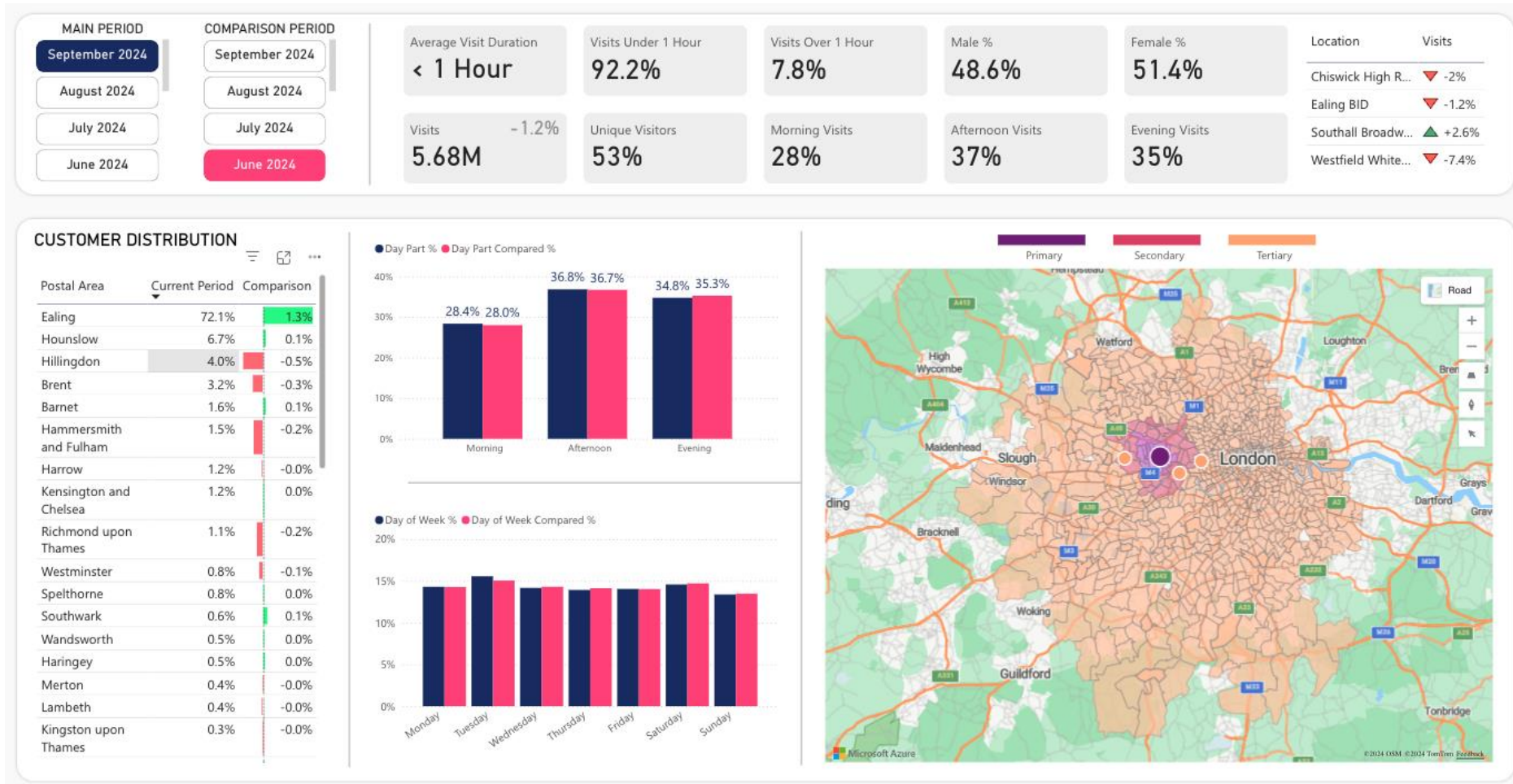
Day Part % Comparison

Day Part	Current Period	Comparison
Morning	28.4%	28.4%
Afternoon	36.8%	36.3%
Evening	34.8%	35.2%

Day of Week % Comparison

Day of Week	Current Period	Comparison
Monday	14.5%	14.5%
Tuesday	15.5%	14.5%
Wednesday	14.5%	14.5%
Thursday	14.5%	14.5%
Friday	14.5%	13.5%
Saturday	14.5%	14.5%
Sunday	13.5%	13.5%

# September Footfall 2024 compared to June 2024



# September Footfall 2024 compared to November 2023

